

How to grow sweet peas

BRING NATURE HOME ACTIVITY

Many of our bees are in trouble because there are not enough flowers growing for them to find food. Follow this simple guide to grow your own sweet peas from seed and give wild bees some much needed food this summer!

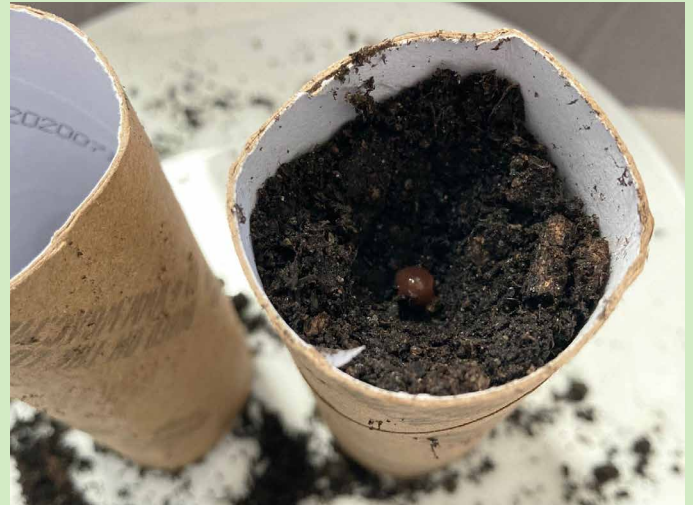


What you will need

- A plate or tray
- Sweet pea seeds
- Water
- Toilet roll tubes
- Compost or soil

Sow annual sweet peas in either October-November or late January-April and plant them out in March or April.

- 1** Soak seeds in warm water overnight.
- 2** Fill your toilet rolls tubes with compost and place them on the tray. Place two seeds in each roll on the surface of the compost and push the seeds about 1.5cm down into the compost. Cover the seeds with more compost and then gently water.
- 3** Put your toilet rolls on a windowsill, or in a greenhouse or cold frame. If you don't have any of these just pop them outside and bring them inside at night so they don't get too cold.
- 4** When your plants start to out-grow their toilet rolls tubes try moving them into a bigger container. If you don't have a plant pot, look in your plastic recycling for a container. Remember to poke holes in the bottom!
- 5** Plant your sweet peas out into a garden or large container in March or April. You can let your sweet peas go wild, or gently tie them to a stick or cane stuck in the ground so they wind around and grow upwards.



- 6** As the flowers fade, pick them and your plant will grow even more flowers in their place, providing food for bees all summer long!